



Battery and Inverter Data Sheet

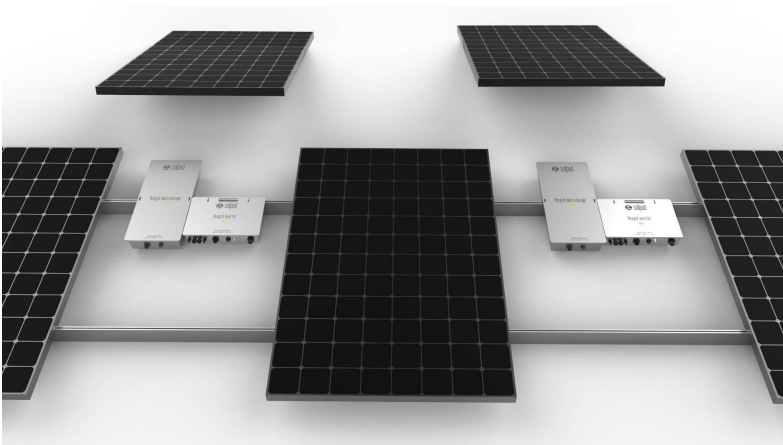
The SolPad Energy System easily mounts to virtually any size PV or racking system to create a personal power plant that will intelligently store, manage and distribute clean renewable energy.



- True plug and play storage
- Intelligent storage & management
- CA Rule 21 compliant
- Highest efficiency of any Battery/Inverter system
- Easily mounts to virtually any racking system
- UL Compliant
- Smart Grid ready
- True 240 V Split Phase w/ Neutral
- On and Off-Grid compatible

System Configurations

System Size (inverter/batt units) any quantity possible	1	2	3	4	5	12	20
PV Panels Combinations	0-4	≤ 8	≤ 12	≤ 16	≤ 20	≤ 48	≤ 80
AC Power	960w	1.9 kW	2.9 kW	3.8 kW	4.8 kW	11.5 kW	19.2 kW
Storage Capacity	2.15 kWh	4.3 kWh	6.4 kWh	8.6 kWh	10.8 kWh	25.8 kWh	43 kWh



The SolPad Energy Appliance easily mounts to virtually any size PV or racking system to create a personal power plant that will intelligently store, manage and distribute clean renewable energy.

Performance Specifications

AC Voltage (Nominal)	120/ 240V
Feed-In Type	True Split Phase
Grid Frequency	60 Hz
Grid Integration	AC Coupled
Applications	On-Grid, Off-Grid Backup
Real Power max continuous	960 W
PV Interface	DC Coupled
Disconnect	Automatic, Integrated
System Listing	UL9540, UL1741 SA2, UL1973, UL61010-1
Warranty	Inverter- 25 years; Battery- 10 years
MPPT dynamic efficiency	> 99% CEC
Roundtrip efficiency % (Solar>Battery>Grid)	> 94%
Comm. ports	Serial, Ethernet, WiFi, BLE, LTE 4G
Communication protocols	256-bit AES encrypted MODBUS
Communication and control standards	IEEE2030.5 and IEE1547:2018

Inverter and PV Interface Specs

Inverter Efficiency	> 96% Peak
Input	SolPad Battery
AC Port	240 V Split Phase w/ Neutral
Max Power Input	500W x 2 (input current limited)
Independent MPPT Inputs	2
Max input current	12A X 2
MPP Voltage	24VDC – 75VDC
Open Circuit Voltage maximum	88VDC
Common Module Parings	235 W – 500 W+
Off-Grid Continuous AC Output Current	4A
Off-Grid Max Power	1.2kW

Battery Specifications

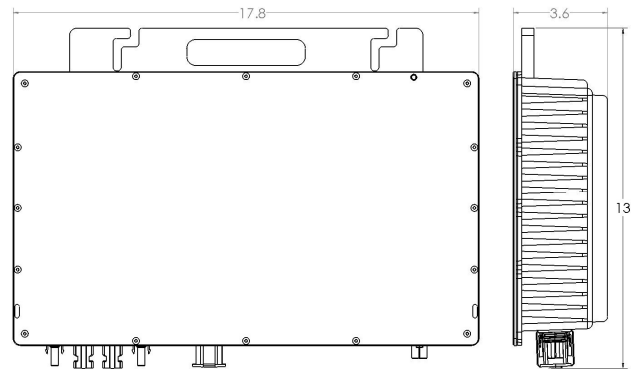
(Per Unit)

Nominal Voltage	51.2 V
Total Energy	2.155 kWh
Battery Coupling	DC Coupled

Mechanical / Environmental Specs

Operating Temperature Range (battery)	- 40°C to + 55°C (-40 to 131°F)
Dimensions (Battery)	12.4 x 26.2 x 3.6"
Dimensions (Inverter)	17.8 x 13 x 3.6"
Connector type	MC4 (or Amphenol)
Elevation	3000 M (9840 ft)
Enclosure (battery)	IP 67
Enclosure (inverter)	IP 67
Inverter Weight	15 lbs
Battery Weight	34 lbs
Cooling	Passive

SolPad Inverter Dimensions



SolPad Battery Dimensions

