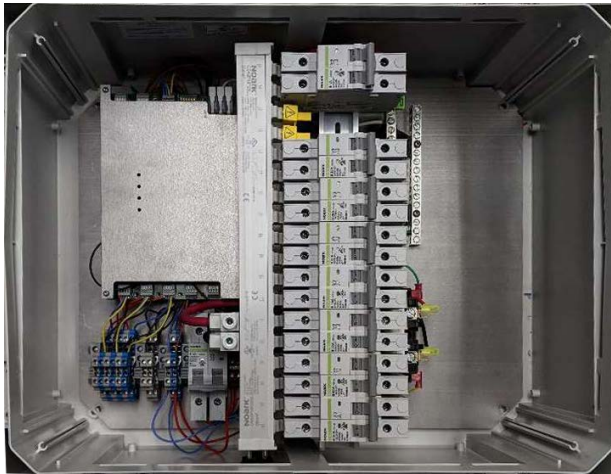




# SolPad Gateway Specs

The SolPad Gateway simplifies a storage installation by surface mounting to a wall adjacent to the main service panel and serving as a communication gateway, a solar combiner and critical load subpanel all at once.



- Simplifies complex traditional solar installs
- Combiner, subpanel, and gateway all in one
- Wireless, Ethernet, optional Cellular communication
- Mounts next to main service panel
- Compliance to UL and CSA standards

## System Configuration Examples

Inverter & Storage (units)	1	2	3	4	5	8	12	16	20
PV Panels & Max PV Input (watts)	0 - 4 (1 kW)	≤ 8 (2 kW)	≤ 12 (3 kW)	≤ 16 (4 kW)	≤ 20 (5 kW)	≤ 32 (8 kW)	≤ 48 (12 kW)	≤ 64 (16 kW)	≤ 80 (20 kW)
AC Power	960 W	1.9 kW	2.88 kW	3.8 kW	4.8 kW	7.6 kW	11.5 kW	15.3 kW	19.2 kW
Storage Capacity	2.15 kWh	4.3 kWh	6.4 kWh	8.6 kWh	10.8 kWh	17.2 kWh	25.8 kWh	34.4 kWh	43 kWh
Branches	1	1	1	1	2	2	3	4	5
Breakers in Gateway	1 x 20A	1 x 20A	1 x 20A	1 x 20A	2 x 20A	2 x 20A	3 x 20A	4 x 20A	5 x 20A



Located between the j-box and the POI, the gateway combines branches, facilitates grid interaction, and manages storage.

## Model Number

SG-20k	SolPad Gateway
--------	----------------

## Electrical Specifications

Rating	Continuous duty
System Voltage	120/240 VAC, 60 Hz
Busbar	200A
Max continuous current rating	200A
Branch circuits for solar and storage	5 two-pole 20A /240 VAC DIN rail-mounted breakers
Nominal System Voltage	240 volts
Rated Output current	200A
Rated Input Current, each branch	16A
Maximum fuse/circuit breaker rating (output)	200A
Production Metering CT	Split Core CT (standard) Rogowski Coil (optional)

## Mechanical Data

Dimensions	400mm x 500mm x 210mm 15.78" x 19.68" x 8.26"
Weight	TBD
Ambient temperature Range	-40° to +50° C
Cooling	Passively Cooled, Natural Convective
Enclosure environmental rating	NEMA 3R
Wire Size	14 to 6 AWG (branch circuits) 12 to 4 AWG on Output

## Accessories

Cell modem	Plug and play modem w/data plan
------------	---------------------------------

## Rapid Shutdown

Switch type	E-Stop (mushroom switch)
Compliance	UL 1741

## Compliance

Compliance gateway	CAN/CSA 61010-1
--------------------	-----------------

## Internet Connection Options

Internet Connectivity	Ethernet, Wi-Fi, BLE, Cellular (optional)
Communication protocols	RS485/Modbus, CANbus, Wi-Fi, Ethernet
Communication and control standards	IEEE2030.5

## SolPad Gateway Dimensions

