



Load Controller Data Sheet

The SolPad Load Controller works seamlessly with the SolPad Energy Manager controlling loads to maximize stored energy and minimize utility and demand charges.

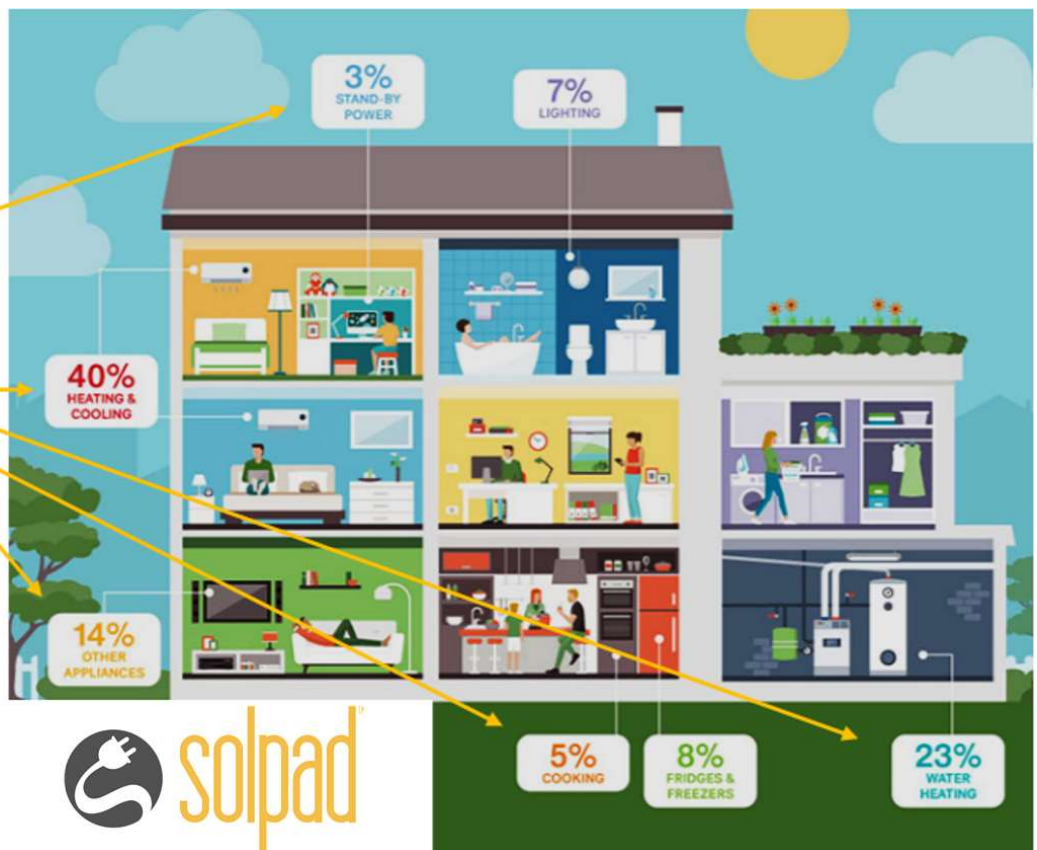


Total Home Backup

- Eliminates need for a sub-panel
- No main panel change out
- Installs next to main load center
- 50% faster installation
- Available for new construction
- Built in Wi-Fi & LTE for remote management

Smart Load Control

- Maximize battery hours during critical times
- Automatically shuts down loads
- Puts your storage system on auto pilot
- Helps prevent excess generator use
- Can adapt to utility rate changes



"...easiest system to install and control daily energy use..."

Automate Up To 32 Breakers with One Box

Products	6 Relay	12 Relay	24 Relay	32 Relay
Model Number	SLC-1180-0420-0230	SLC-1180-0920-0230-0150	SLC-11180-1920-0430-0150	SLC-1180-2620-0430-0250
Relays	(4) 20-amp SPDT @ 240 vac (2) 30-amp DPDT @ 240vac	(9) 20-amp SPDT @ 240 vac (2) 30-amp DPDT @ 240vac (1) 50-amp DPDT @ 240vac	(19) 20-amp SPDT @ 240 vac (4) 30-amp DPDT @ 240vac (1) 50-amp DPDT @ 240vac	(26) x 20-amp SPDT @ 240 vac (4) 30-amp DPDT @ 240vac (2) 50-amp DPDT @ 240vac

System Enclosure

Dimensions	19.65" x 15.74" x 8.36"	19.65" x 15.74" x 8.36"	19.65" x 15.74" x 8.36"	19.65" x 15.74" x 8.36"
Supply Power	4 amps @120 vac	4 amps @120 vac	4 amps @120 vac	4 amps @120 vac
Relative Humidity	10% to 90% (operation), 5% to 95% (storage)			
Enclosure	NEMA 4R			

Network

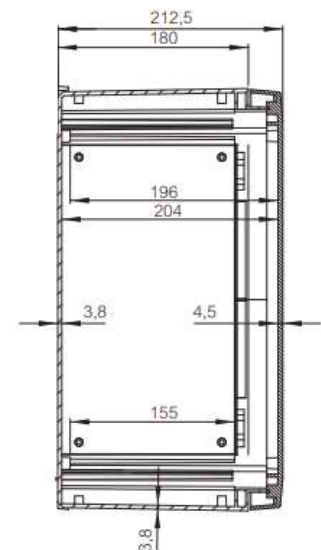
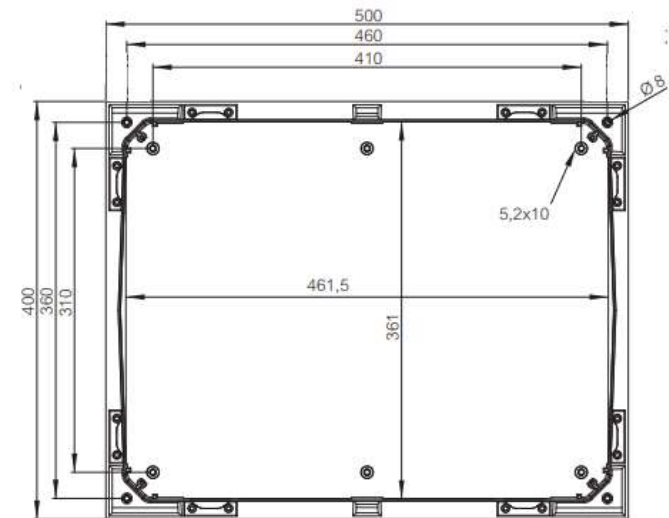
Network options	Ethernet, Wi-Fi, Cellular, Zigbee, PCI Express, USB, Serial
-----------------	---

Environmental and Reliability

MTTF	> 200,000 hours
Operational Temp Commercial	0° to 70° C
Storage Temperature	-40° to 85° C
Relative Humidity	10% to 90% (operation), 5% to 95% (storage)

Memory and Storage

RAM	1 GB, DDR3L-1066
Storage	eMMC flash 16 GB, Micro-SD 16GB



The SolPad Load Controller contains embedded software that allows it to run with or without an internet connection. The software manages the loads based on priority and kW set points, which are programmed at the time of installation. The software is accessible locally through the local Wi-Fi or through direct ethernet cable, as well as with optional 4G (depending on availability). This software also provides the instantaneous status on what is being controlled, as well as historical data.

NOTE: Components and features listed above may or may not be included. System specifics will be determined by customer requirements and preferences. Components and feature listed are subject to change at the discretion of SolPad Inc. See factory warranty for additional details